

Developing video management solutions with Bosch SDKs



BOSCH
Invented for life

Industry:

Security systems installation

End User:

Alphatron Security Systems

Alphatron Security Systems, a System Integrator based in the Netherlands, combines video, data, communications, access and smart analysis software, using Software Development Kits (SDKs) to free up resources and focus on integration. A key component in their tailor-made software is the Alphatron CCTV management suite.

Business Objective:

In creating large tailor-made video management solutions, Alphatron faces many challenges as well as tight deadlines. Thankfully, the latest powerful and easy-to-use SDKs from Bosch can make their life much easier – and significantly reduce costs – by overcoming some of the integration and new technology difficulties. What's more, SDKs allow company's such as Alphatron to exploit hardware and software features to their full potential.

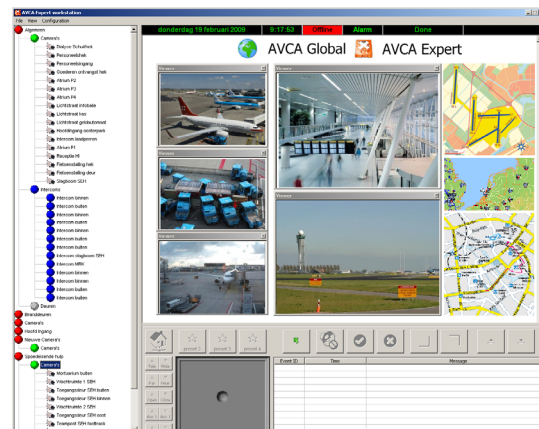
Solution:

The "Alphatron Visual Control Application" (AVCA) is a scalable, user-friendly software suite offering easy CCTV management. By using the Bosch SDKs at development time, the AVCA applications (AVCA Global, Expert and VIP) have become cost-effective and offer fast customization and expansion possibilities.

Recently, Alphatron enhanced the CCTV security at KLM Cargo's facilities around Schiphol Airport (Amsterdam). The company's designed solution offers centralized control of several multi-site CCTV systems. What's more, it can now efficiently monitor and control a total of 500 cameras at the facilities.

At each of KLM's individual network control centers, an AVCA Expert System Manager (illustrated) controls the system. Bosch SDK components were used to create a fully controllable and customizable video matrix. A typical example of what can be offered by the SDK is a feature such as the Device Finder component. This allows extra cameras to be added to the network and video matrix very easily, with minimum effort for the system integrator.

Another example is the SDK's Cameo display component. This component automatically decodes the incoming compressed



video stream of a camera into a fully-rendered, individual picture window. There is no need for the System Integrator to bother with the details of the stream.

With the benefit of SDKs, the new security system developed for KLM by Alphatron was commissioned quickly (within two months) meeting KLM's requirements of local and central control, and offering state-of-the-art surveillance and security.

Result:

As new Bosch hardware is developed, Alphatron can simply pick the specific components it needs and drop them into the AVCA software development environment to obtain the required functionality – without having to know anything about the components' internal operations. Moreover, the newer SDKs are based on the modern Microsoft .Net platform. This allows state-of-the-art development via common programming languages like C# (C sharp), Visual Basic .NET, Java, VB6, and VB scripting and C++.

Alphatron Security Systems B.V.
PO Box 21003
3001 AA Rotterdam
<http://www.alphatronsecuritysystems.nl>

Bosch Security Systems
www.boschsecurity.com